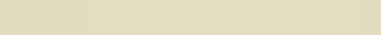


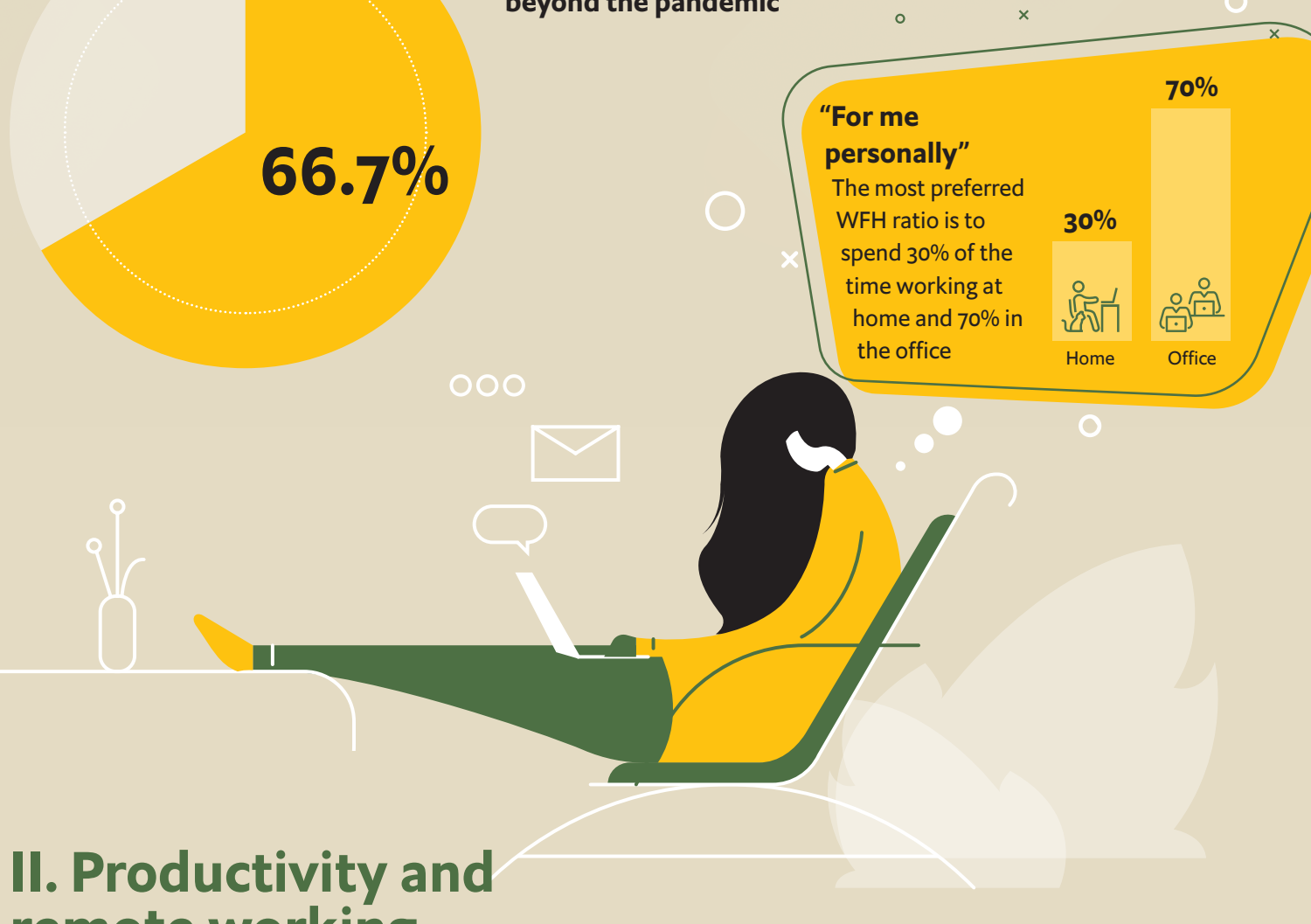
A changed workplace, a new productivity

The Economist Intelligence Unit, sponsored by Kyocera Document Solutions, conducted a global survey in May 2021 of more than 360 business executives on the implications of remote work on organisations, their employees and on productivity

Supported by



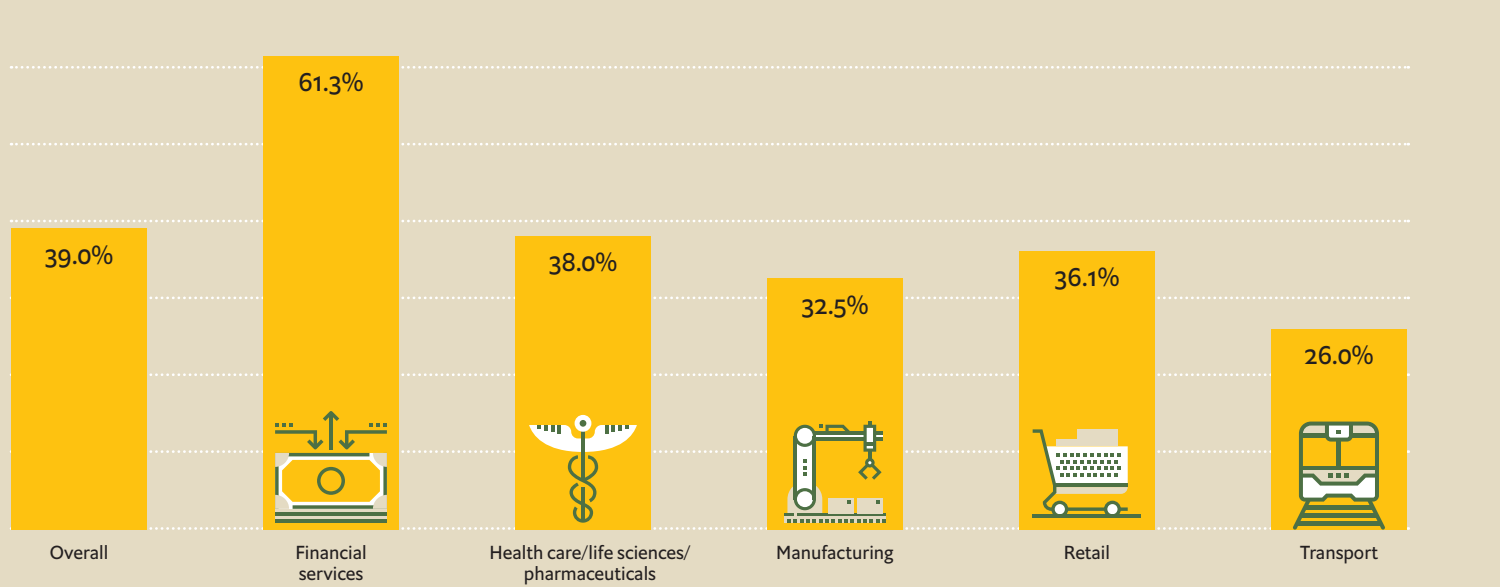
I. Is working from home (WFH) here to stay?



II. Productivity and remote working

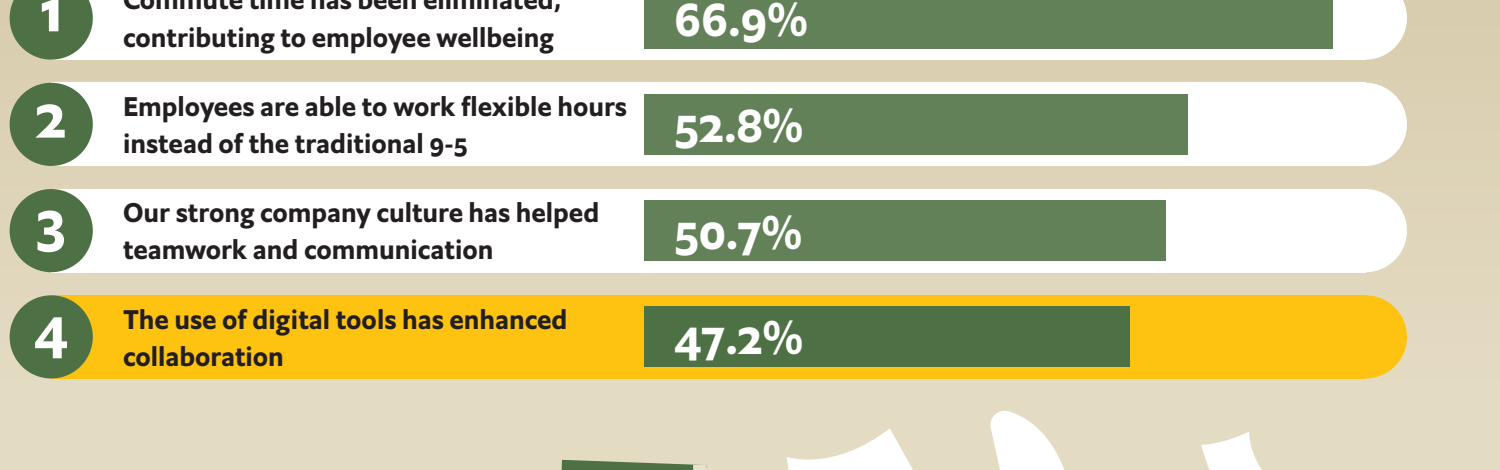


Share of respondents seeing increased productivity, by sector

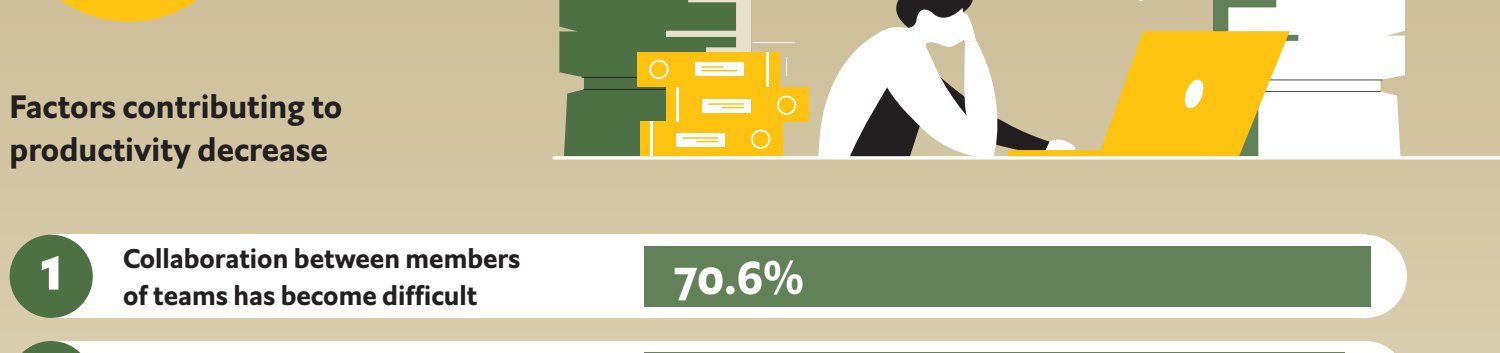


Digital tools are important enablers of productivity in remote settings

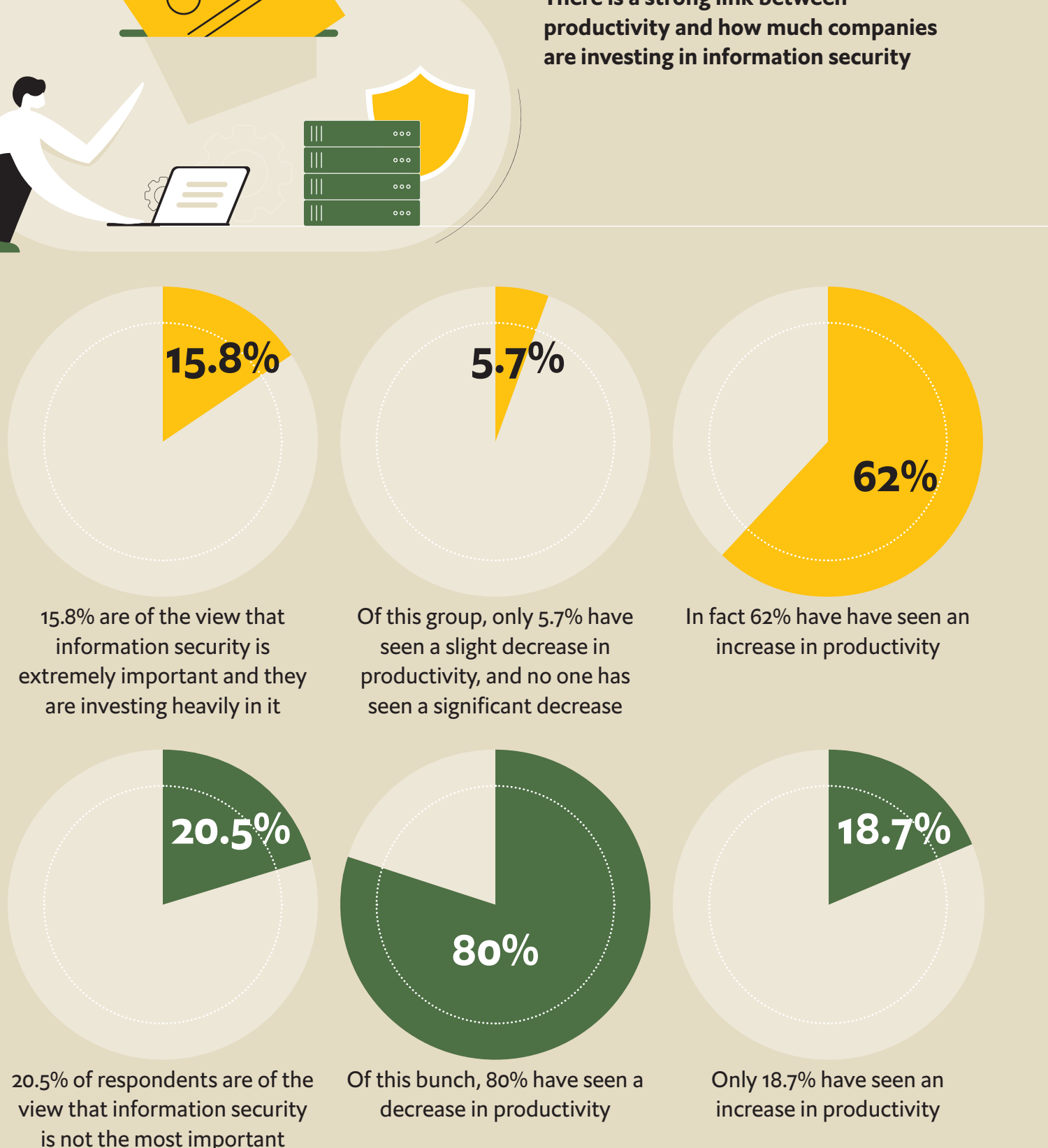
Factors contributing to productivity increase



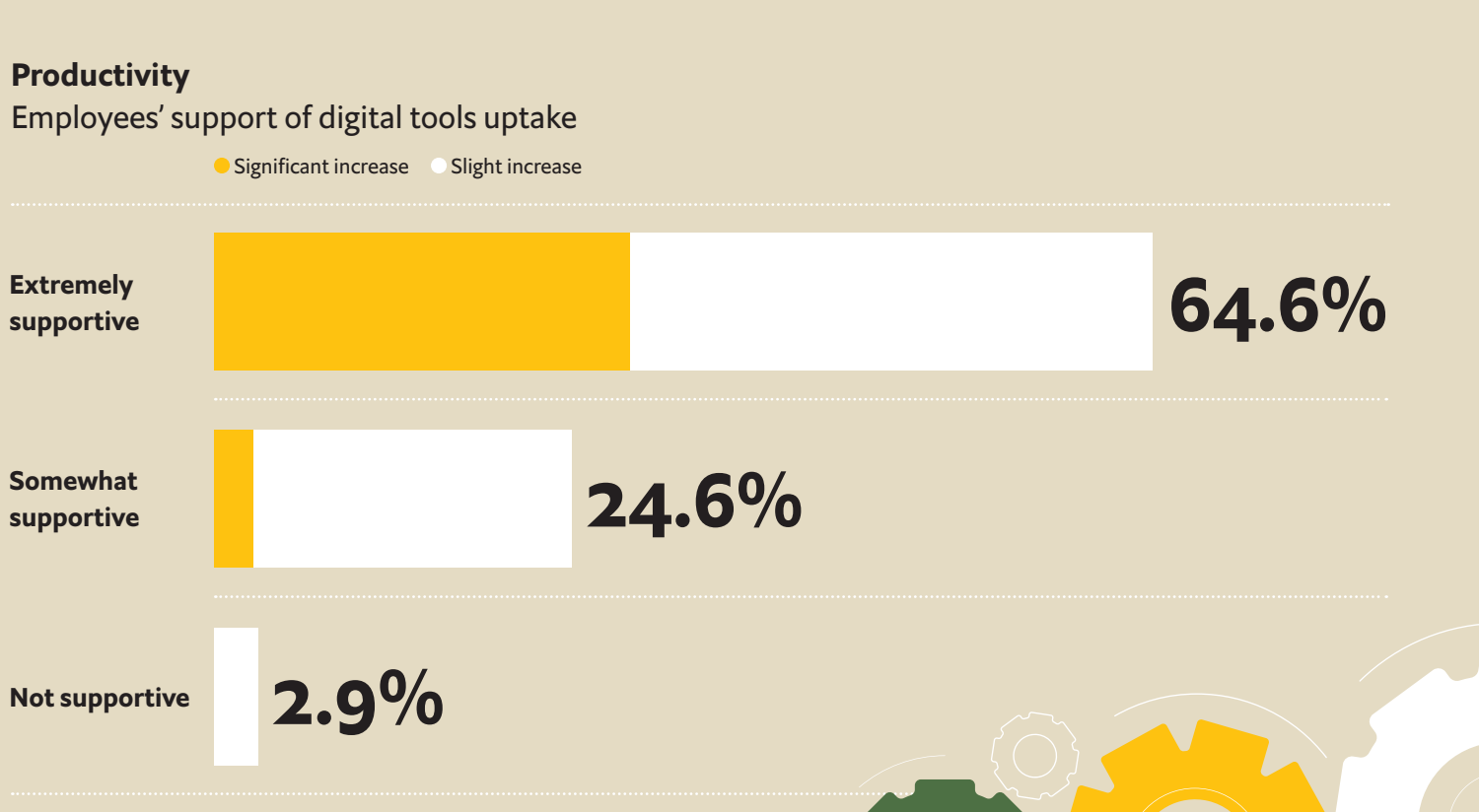
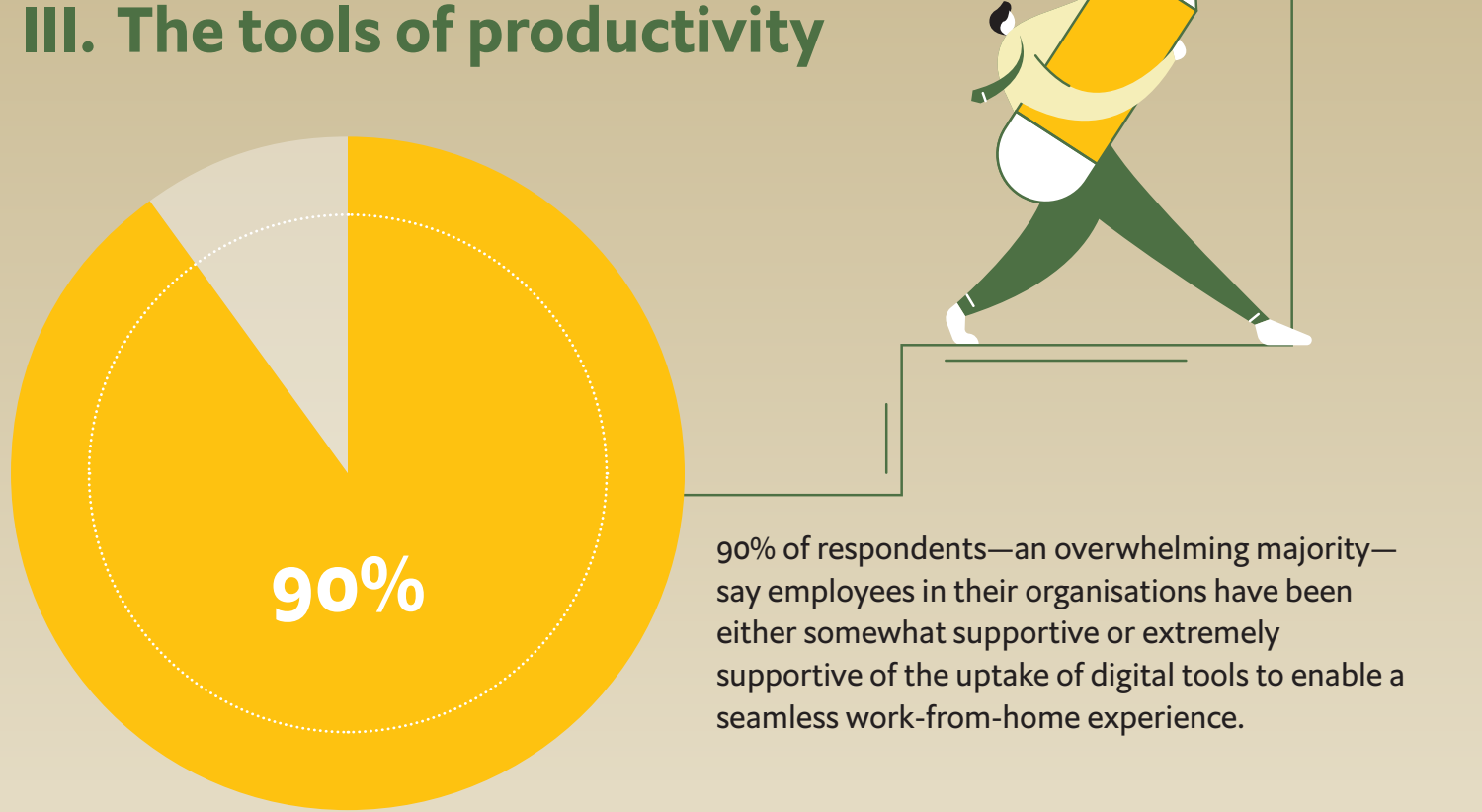
Factors contributing to productivity decrease



There is a strong link between productivity and how much companies are investing in information security

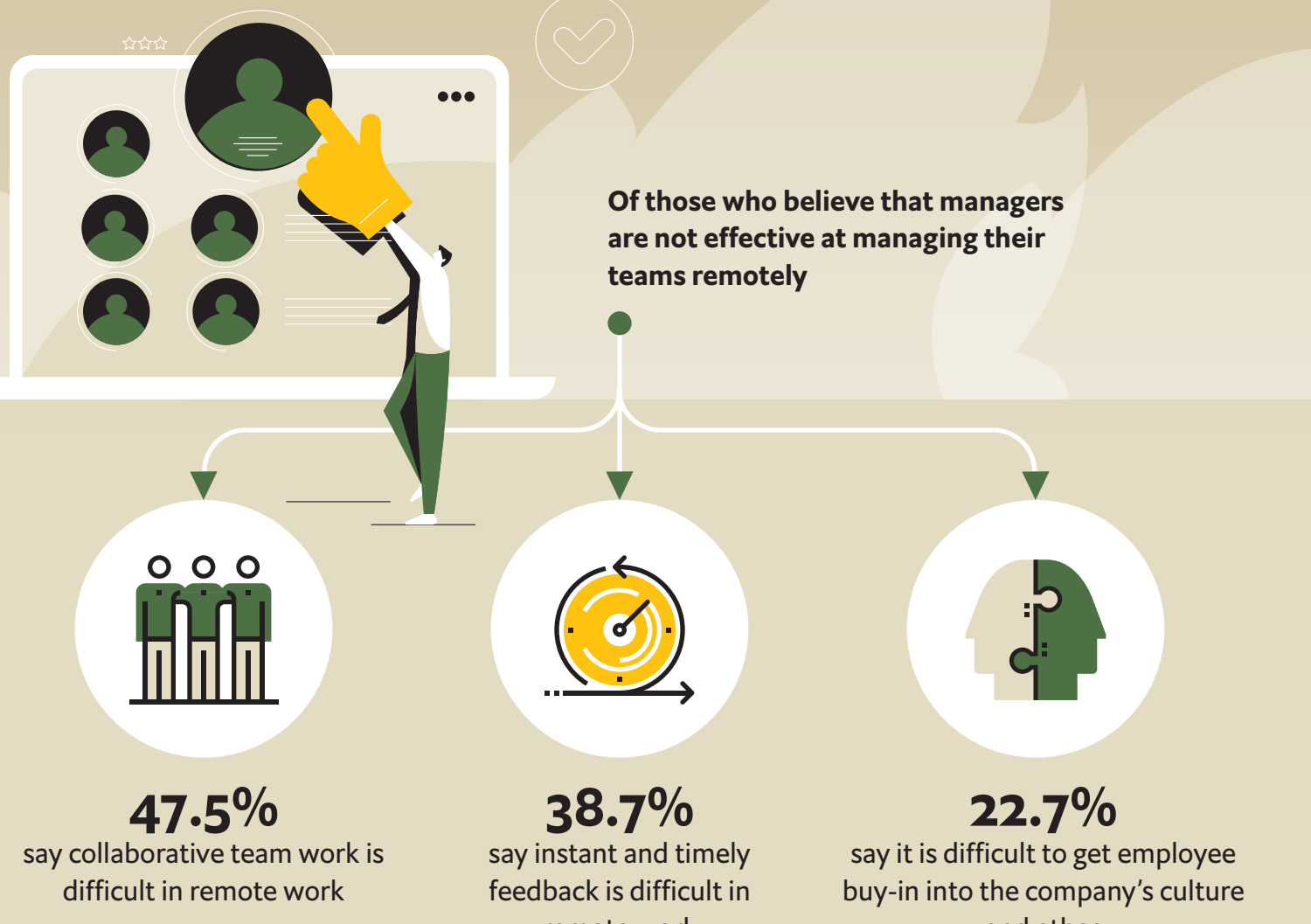


III. The tools of productivity



IV. The human element

The top contributing factor to productivity decrease was “difficulty in collaborating with team members” (70.6%). While working from home increases employee engagement and well-being, the value of in-person interactions can never be replaced.



“I don't think this is a band-aid moment where you just have to solve an issue for a few weeks, months, or years, and then we're back to normal. I think the world will look very different, so I implore companies to think beyond just solving for the immediate fix day-to-day and to think bigger.”

Darren Thayre, head of digital transformation and digital ventures, Japan and the Asia-Pacific, Google